

## **PRESSACAVI 2001**

*in Ottone, passo GAS*



# PRESSACAVI 2001

## *Caratteristiche tecniche*

Materiale (Corpo)

Ottone

Materiale (Guarnizione)

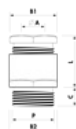
PVC 50 sh A



# PRESSACAVI 2001

## Elenco dei prodotti

### 2001



Tipo	Foro Fissaggio	ØA Max	ØA Min	Imballo standard	Imballo minimo	B2	B1	L Min	L Max	P	C	Diametro esterno
200101441	13,5 mm	7 mm	5,5 mm	400	100	15 mm	13 mm	14 mm	17 mm	G1/4"	6,5 mm	
207101441	13,5 mm	7 mm	5,5 mm	400	100		13 mm	14 mm	17 mm	G1/4"	6,5 mm	15 mm
200103841	17 mm	8,5 mm	6,5 mm	200	100	19 mm	17 mm	15 mm	19 mm	G3/8"	7,5 mm	
200101241	21,5 mm	11 mm	8 mm	100	100	23 mm	21 mm	17 mm	23 mm	G1/2"	8 mm	
200105841	23,5 mm	14 mm	11 mm	100	50	25 mm	23 mm	20 mm	24 mm	G5/8"	8,5 mm	
200103441	27 mm	17,5 mm	14,5 mm	50	50	29 mm	27 mm	20 mm	26 mm	G3/4"	9 mm	
200110041	34 mm	22 mm	18 mm	25	25	36 mm	34 mm	23 mm	28 mm	G1"	10 mm	
200111841	38 mm	26 mm	21 mm	25	25	40 mm	38 mm	23 mm	28 mm	G1"1/8	10,5 mm	
200111441	42 mm	32 mm	28 mm	20	20	45 mm	42 mm	25 mm	31 mm	G1"1/4	11,5 mm	
200111241	48 mm	36 mm	32 mm	20	20	50 mm	48 mm	28 mm	35 mm	G1"1/2	11,5 mm	
200120041	60 mm	42 mm	38 mm	10	10	64 mm	60 mm	31 mm	37 mm	G2"	13,5 mm	
200121221	76 mm	57 mm	44 mm	5	5	80 mm	80 mm	32 mm	37 mm	G2"1/2	20 mm	
200130021	89 mm	69 mm	67 mm	5	5	95 mm	95 mm	42 mm	52 mm	G3"	20 mm	
200101441N	13,5 mm	7 mm	5,5 mm	400	100	15 mm	13 mm	14 mm	17 mm	G1/4"	6,5 mm	
207101441N	13,5 mm	7 mm	5,5 mm	400	100		13 mm	14 mm	17 mm	G1/4"	6,5 mm	15 mm
200103841N	17 mm	8,5 mm	6,5 mm	200	100	19 mm	17 mm	15 mm	19 mm	G3/8"	7,5 mm	

200101241N	21,5 mm	11 mm	8 mm	100	100	23 mm	21 mm	17 mm	23 mm	G1/2"	8 mm	
200105841N	23,5 mm	14 mm	11 mm	100	50	25 mm	23 mm	20 mm	24 mm	G5/8"	8,5 mm	
200103441N	27 mm	17,5 mm	14,5 mm	50	50	29 mm	27 mm	20 mm	26 mm	G3/4"	9 mm	
200110041N	34 mm	22 mm	18 mm	25	25	36 mm	34 mm	23 mm	28 mm	G1"	10 mm	
200111841N	38 mm	26 mm	21 mm	25	25	40 mm	38 mm	23 mm	28 mm	G1"1/8	10,5 mm	
200111441N	42 mm	32 mm	28 mm	20	20	45 mm	42 mm	25 mm	31 mm	G1"1/4	11,5 mm	
200111241N	48 mm	36 mm	32 mm		10	50 mm	48 mm	28 mm	35 mm	G1"1/2	11,5 mm	
200120041N	60 mm	42 mm	38 mm	10	10	64 mm	60 mm	31 mm	37 mm	G2"	13,5 mm	
200121221N	76 mm	57 mm	44 mm	5	5	80 mm	80 mm	32 mm	37 mm	G2"1/2	20 mm	
200130021N	89 mm	69 mm	67 mm	5	5	95 mm	95 mm	42 mm	52 mm	G3"	20 mm	